

Connectors Supported

UXP-DF-12
UXP-NM-12
UXP-NF-12
UXP-DRA-12
UXP-NRA-12
UXP-MDM-12
UXP-MDF-12
UXP-MRA-12
UXP-DM-12
UXP-4F-12
UXP-4MT-12



UXP-4RT-12
UXP-4MP-12

Tools/Materials



Step #1: Prep

Always wear safety glasses when operating tools.

With a few simple steps, JMA compression connectors can be easily and consistently installed on 1/2" cable.



Straighten cable. Use RDCUTTER-S, applying even pressure around cable while rotating tool around cable to cut off cable squarely.



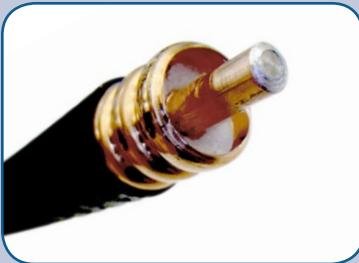
Attach prep/strip tool to drill.



Actuate drill to remove jacket and expose the center conductor, then make sure the final cut is in the valley.



Use the coring bit "U" to remove dielectric until cable reaches stop on tool. You may optionally use the included T-Handle to prep/strip and core cable.

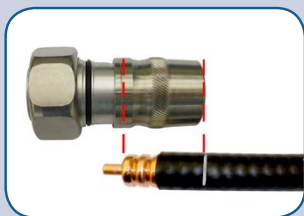


Cable will have approximately one corrugation of dielectric removed.

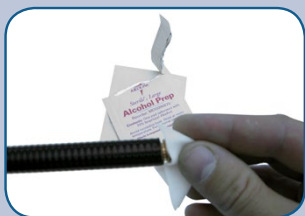


Use center conductor cleaner ("SP-CC tool") to remove any remaining dielectric material on center conductor.

Step #2: Install



Align outer conductor as shown with groove on cap. Mark cable jacket (using pen or marker) in line with end of connector.



Use alcohol wipe to clean inner and outer conductors thoroughly.



Push connector onto cable until it reaches alignment mark (until 2 clicks are heard/felt).



Step #3: Compress

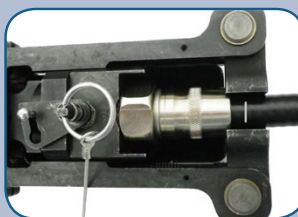
Connector	Frameset Insert
7-16 DIN	A
RA	A
N	B
4.1-9.5	C
4.3-10	D



Insert A Insert B Insert C Insert D
Refer to chart to select proper insert for connector type.



Select proper insert for connector. Pull/push back the insert to allow connector/cable to lay flat in frame.



Make sure connector is fully seated. Press HCG tool trigger until gun cycles. Do not pull or push on tool during compression.



When fully compressed, connector will move away from alignment mark.

Step #4: Torque



When using the torque wrench, make sure the mating connector is supported by an adjustable wrench.

Series	Torque (in. lbs.)	Hex Nut Size
N	14 (1.2 ft-lbs)	3/4"
DIN	216 (18 ft-lbs)	1-1/4"
4.1-9.5 & 4.3-10	96 (8 ft-lbs)	7/8"

Use proper torque based on the type of interface.

Note:

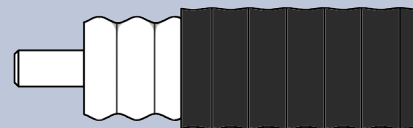
4.3-10 Push/Pull Connectors (4MP)
Do Not Require Torque Step

Mobile-enabled:
JMAqr.com



Scan for install video.

Cable preparation guide



Compare to picture to determine if correct cable prep was performed.
(For reference only)