

### Connector



UXP-DM-114

UXP-DF-114

Always wear  
safety glasses  
when operating  
tools.

### Tools/Materials



HCG-FRAMESET-114

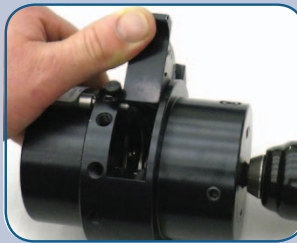


### Step #1: Prep

*With a few simple steps, JMA compression connectors can be easily and consistently installed on 1 1/4" cable.*



Straighten cable and position RDCUTTER in valley of corrugation and cut off cable squarely.



Attach prep/strip tool to drill. Open blade lever and lock with pin. Insert cable and actuate drill.



Actuate drill until outer conductor reaches fixed stop; this will remove jacket.



Make sure blade is positioned over valley closest to end of cable, release blade lever and continue until cable is completely cut.



Blade lever is shown fully closed. Open lever, lock with pin, and remove tool. Two ridges should be visible.



Hold drill and pull stripping tool forward to eject the cable slug. Make sure any remaining cable is removed from tool.

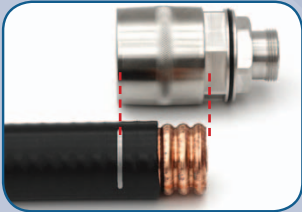


**Re-apply stripping tool to remove one more corrugation of jacket for three full visible ridges.**

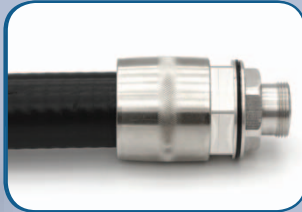


After stripping again, cable is ready for connector measurement marking. **Three full visible ridges** are acceptable. See that the cut is made in the "valley."

### Step #2: Install



Align connector as shown with end of cap. Mark cable jacket (using pen or marker) in line with end of connector.



Use the provided alcohol wipe to clean the outer conductor. Push and twist connector onto cable until it reaches the cable mark.



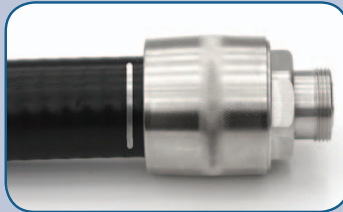
Pull/push back the insert to allow connector/cable to lay flat in frame. Make sure connector is fully seated.



### Step #3: Compress



Press HCG tool trigger until gun cycles. Do not pull or push on tool or cable during compression.



After connector is fully compressed, connector will move away from alignment mark.



Add connector port seal (DIN female only) to ensure a moisture-proof connection. The port seal should sit in the flat area behind the threads.

### Step #4: Torque



Stabilize connector with adjustable wrench and always be sure to torque the mating connector.

Series	Torque (in. lbs.)	Hex Nut Size
DIN	216 (18 ft. lbs.)	1-1/4"

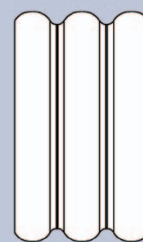
Use proper torque based on the type of interface.

Mobile-enabled:  
JMAqr.com



Scan for install video.

### Cable preparation guide



Compare to picture to determine if correct cable prep was performed.

(For reference only)