

Connector



- UXP-DF-78FX
- UXP-DM-78FX
- UXP-NF-78FX
- UXP-NM-78FX
- UXP-MDM-78FX

Tools/Materials



Compressed Air



Pliers



TW1412
Torque Wrench
N-Male



TQ-114-F18
Torque Wrench
Din-Male



12" Adjustable
Wrench



Safety Glasses



TQ-78-F8
Torque Wrench
Mini Din-Male



Monofilament Line



SP-78FX Prep/Strip Tool



HCG-FRAMESET-7/8



Alcohol Wipe



RDCUTTER-S



Power Drill

Always wear safety glasses when operating tools.

Step #1: Prep

With a few simple steps, JMA compression connectors can be easily and consistently installed on 7/8" FX cable.



Straighten cable and position RDCUTTER-S in valley of corrugation and cut off cable squarely.



Attach prep/strip tool to drill. Open blade lever and lock with pin. Insert cable and actuate drill.



Actuate drill until outer conductor reaches fixed stop; this will remove jacket.



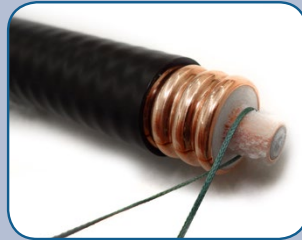
Make sure leftmost blade is positioned over valley and rightmost blade will be positioned over peak closest to end of cable. Release blade lever and continue until cable is completely cut.



Blade lever is shown fully closed. Open lever, lock with pin, and remove tool. Make sure any remaining cable is removed from tool.



Remove cut outer conductor and dielectric slug with pliers.

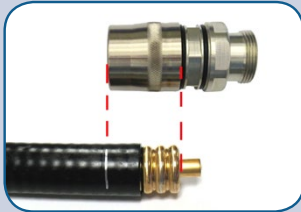


Use monofilament line (10-20lb test) to remove foam from the center conductor, pulling the line back and forth.



Properly stripped cable is ready for connector measurement marking. Three full visible ridges are acceptable. See that the cut is made in the 'valley'.

Step #2: Install



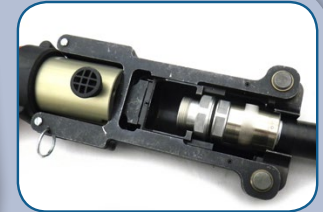
Align outer conductor as shown with end of cap. Mark cable jacket (using pen or marker) in line with end of connector.



Use alcohol wipe to clean inner and outer conductors thoroughly. Use compressed air to remove any debris from dielectric or conductors.



Push and twist connector onto cable until it reaches the cable mark.



Pull/push back the insert to allow connector/cable to lay flat in frame. Make sure connector is fully seated.

Step #3: Compress



Press HCG tool trigger until gun cycles. Do not pull or push on tool or cable during compression.



After connector is fully compressed, connector will move away from alignment mark.



Add connector port seal (DIN female only) to ensure a moisture-proof connection. The port seal should sit in the flat area behind the threads.

Step #4: Torque



When using the torque wrench, make sure the mating connector is supported by an adjustable wrench.

Series	Torque (in. lbs.)	Hex Nut Size
N	14 (1.2 ft-lbs)	3/4"
DIN	216 (18 ft-lbs)	1-1/4"
MDM	96 (8 ft-lbs)	3/4"

Use proper torque based on the type of interface.

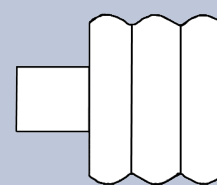


Mobile-enabled:
JMAqr.com



Scan for install video.

Cable preparation guide



Compare to picture to determine if correct cable prep was performed. (For reference only)