

### Connector



UAL-DM-500

UAL-DF-500

UAL-NM-500

UAL-NF-500

UAL-DRA-500

UAL-NRA-500

UAL-MDM-500

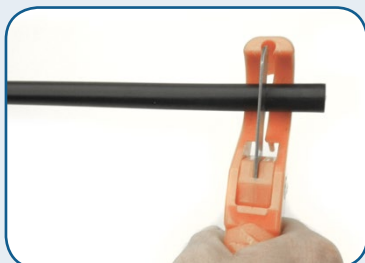
Always wear  
safety glasses  
when operating  
tools.

### Tools/Materials



### Step #1: Prep

*With a few simple steps, PPC compression connectors can be easily and consistently installed on 500 cable.*



Straighten cable. Using RDCUTTER-S, apply even pressure around cable while rotating tool around cable to cut off cable squarely.



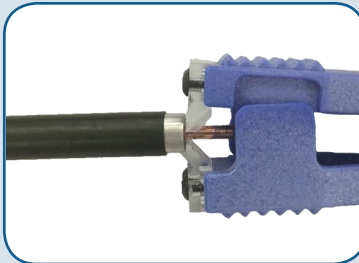
Attach prep/strip tool to drill. Set drill to high speed.



Actuate drill to remove jacket, expose the center conductor. This will also core the dielectric.



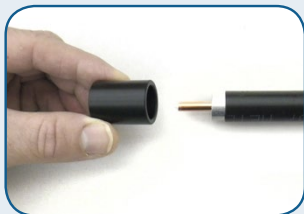
You may optionally use the included T-Handle to prep/strip and core cable. Cable will have approximately 1/8" of dielectric removed.



Use center conductor cleaner ("SP-CC tool") to remove any remaining dielectric material on center conductor.



## Step #2: Install



Slide marking guide onto cable until it bottoms.



Mark cable jacket (using pen or marker) at end of cable marking guide.



Use alcohol wipe to clean inner and outer conductors thoroughly.



Twist connector onto cable until it covers the alignment mark.

## Step #3: Compress

Connector	Frameset Insert
DIN	A
RA	A
N	B
MDM	C



Insert A



Insert B

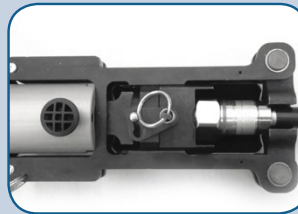


Insert C

Refer to chart to select proper insert for connector type.



Select proper insert for connector. Pull/push back the insert to allow connector/cable to lay flat in frame.

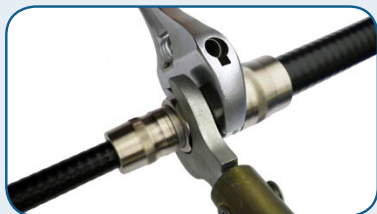


Make sure connector is fully seated. Press HCG tool trigger until gun cycles. Do not pull or push on tool during compression.



When fully compressed, connector will move away from alignment mark.

## Step #4: Torque



When using the torque wrench, make sure the mating connector is supported by an adjustable wrench.

Series	Torque (in. lbs.)	Hex Nut Size
N	14 (1.2 ft-lbs)	3/4"
DIN	216 (18 ft-lbs)	1-1/4"
MDM	96 (8 ft-lbs)	7/8"

Use proper torque based on the type of interface.



Mobile-enabled:



Scan for install video.

### Cable preparation guide



Compare to picture to determine if correct cable prep was performed.  
(For reference only)