

### Connector



- UAL-DM-780
- UAL-DF-780
- UAL-NM-780
- UAL-NF-780
- UAL-MDM-780

Always wear  
safety glasses  
when operating  
tools.

### Tools/Materials



### Step #1: Prep

*With a few simple steps, PPC compression connectors can be easily and consistently installed on 540 cable.*



Straighten cable. Using RDCUTTER-S, apply even pressure around cable while rotating tool around cable to cut off cable squarely.



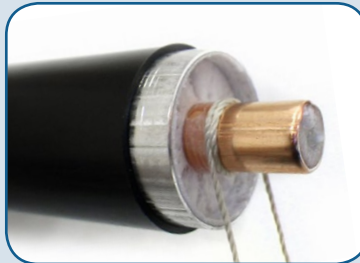
Attach prep/strip tool to drill.



Actuate drill to remove jacket, expose the center conductor. This will also core the dielectric.



Cable will have approximately 1/8" of dielectric removed.



Use monofilament line (10-20 lb test) to remove foam from center conductor, pulling the line back and forth.



### Step #2: Install



Slide marking guide onto cable until it bottoms.



Mark cable jacket (using pen or marker) at end of cable marking guide.

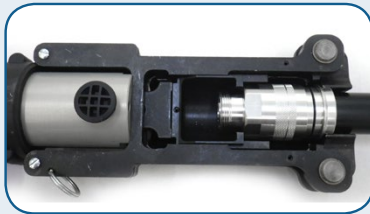


Use alcohol wipe to clean inner and outer conductors thoroughly.

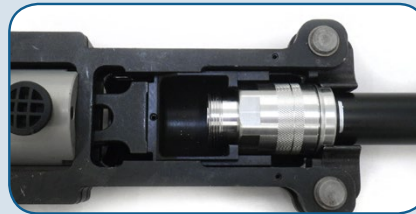


Twist connector onto cable until it covers the alignment mark.

### Step #3: Compress



Load 7/8" frameset onto HCG compression tool. Slide the insert back allowing the connector/cable to lay flat in frame.

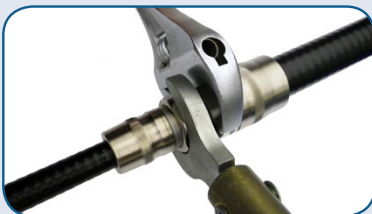


Make sure connector is fully seated. Press the green "ON" button on HCG tool. Then, hold trigger until the connector closes completely. Do not push or pull on tool or cable during compression.



When fully compressed, connector will move away from alignment mark.

### Step #4: Torque



When using the torque wrench, make sure the mating connector is supported by an adjustable wrench.

| Series | Torque (in. lbs.) | Hex Nut Size |
|--------|-------------------|--------------|
| N      | 14 (1.2 ft-lbs)   | 3/4"         |
| DIN    | 216 (18 ft-lbs)   | 1-1/4"       |
| MDM    | 96 (8 ft-lbs)     | 7/8"         |

Use proper torque based on the type of interface.

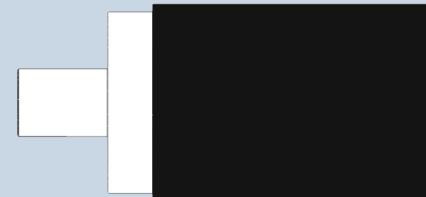


Mobile-enabled:  
ppcqr.com



Scan for install video.

### Cable preparation guide



Compare to picture to determine if correct cable prep was performed.