

Connectors



- UPL-4MT-12S
- UPL-4F-12S
- UPL-4RT-12S
- UPL-4MP-12S
- UPL-DM-12S
- UPL-DF-12S
- UPL-NM-12S
- UPL-NF-12S
- UPL-DRA-12S
- UPL-NRA-12S
- UPL-MDM-12S
- UPL-MRA-12S

Always wear safety glasses when operating tools.

Tools/Materials



Step #1: Prep

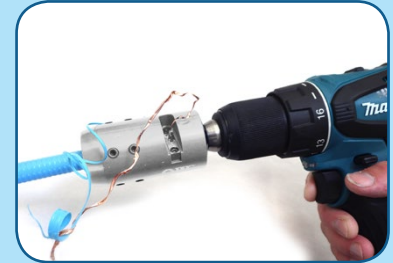
With a few simple steps, JMA compression connectors can be easily and consistently installed on 1/2" plenum cable.



Straighten cable. Using RDCUTTER-S, apply even pressure while rotating tool around cable to cut off cable squarely.



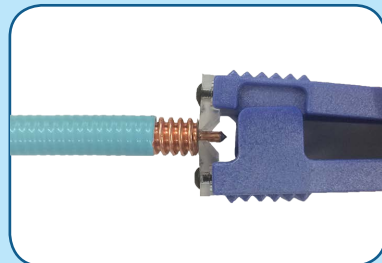
Attach prep/strip tool to drill. Keep the prepped cable end at a downward angle during the prep/coring process.



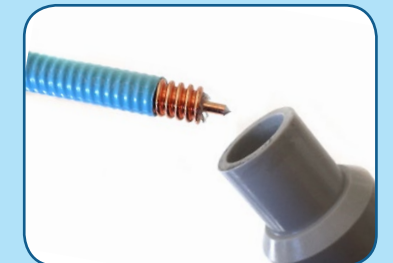
Actuate drill to remove jacket and expose the center conductor, then remove cable from tool.



Proper prep is achieved when center conductor is chamfered as shown. No coring of dielectric required.

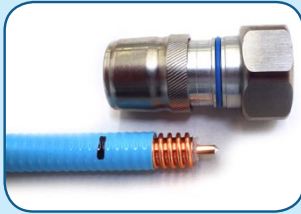


Use center conductor cleaner ("SP-CC tool") to remove any remaining dielectric material on center conductor.



Hold prepped cable end at a downward angle, tapping the cable while vacuuming.

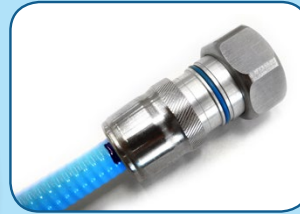
Step #2: Install



Align center conductor as shown with step on the body closest to the nut. Mark cable jacket (using pen or marker) in line with end of connector.



Use alcohol wipe to clean inner and outer conductors thoroughly.



Thread connector onto cable until it reaches alignment mark and until snug (do not over tighten).

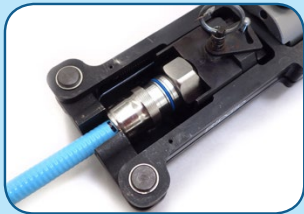


Step #3: Compress

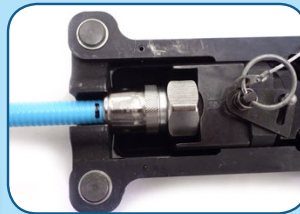
Connector	Frameset Insert
DIN	A
RA	A
N	B
4.1-9.5	C
4.3-10	D



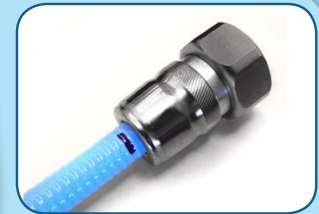
Insert A Insert B Insert C Insert D
Refer to chart to select proper insert for connector type.



Select proper insert for connector. Pull/push back the insert to allow connector/cable to lay flat in frame.



Make sure connector is fully seated. Press HCG tool trigger until gun cycles. Do not pull or push on tool during compression.



When fully compressed, connector will move away from alignment mark.

Step #4: Torque



When using the torque wrench, make sure the mating connector is supported by an adjustable wrench.

Series	Torque (in. lbs.)	Hex Nut Size
N	14 (1.2 ft. lbs.)	3/4"
DIN	216 (18 ft. lbs.)	1-1/4"
4.1-9.5 & 4.3-10	96 (8 ft. lbs.)	7/8"

Use proper torque based on the type of interface.

Note:

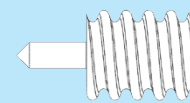
4.3-10 Push/Pull Connectors (4MP)
Do Not Require Torque Step

Mobile-enabled:
JMAqr.com



Scan for install video.

Cable preparation guide



Compare to picture to determine if correct cable prep was performed. (For reference only)