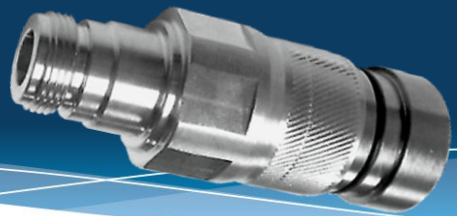


UAL-NF-500



UAL-NF-500 DATA SHEET

N Female Connector for 500 Smoothwall Cables

Mechanical	Specification	Comment
Pull Force Combined	> 175 lbs .78 kN	Cable limited
Cable/Connector Torque	5 ft-lbs 6.7 N-m	Cable limited
Interface Durability	500 Cycles	
Electrical	Specification	Comment
Frequency Range	DC to 6 GHz	
Impedance	50Ω Nominal	
Average Return Loss (VSWR) DTF	> -40dB (1.02) 0-1 GHz, > -36dB (1.03) 1-2 GHz, > -32dB (1.05) 2-4 GHz, -28dB (1.08) 4-6 GHz	As per Anatel 75 *Measured at room temperature. Results may vary based on cable dimensional changes during temperature fluctuation.
Insertion Loss	< .1√F(GHz)	
3rd Order IMD	-153 dBc minimum, -160 dBc typical	As per IEC 62037-2, -3
Voltage Withstand	> 2.5 kV	
Shielding Effectiveness	< -120dB	0-1 GHz
Insulation Resistance	5GΩ initial, 200MΩ after conditioning	
Environmental	Specification	Comment
Operating Temperature/Storage Temperature	-55°C to +85°C / -55°C to +85°C	
Interface Moisture	No leakage, mated or unmated > 1.0 Bar	
Moisture Ingress	No leakage	ANSI/SCTE60 2004, IP-67, IP-68, IEC 60529
Corrosion Resistance	1000 Hours	
H.A.L.T.	40 Hours	
General	Specification	Comment
Cable Supported	CommScope SFX-500, SFX-500-NHR, Times Fiber TFL 500	
Weight	.320 lbs. 145 g	
WPS Weather Protection	WPS-N-4S	
Length	2.770" 70.3 mm	
Outer Diameter	1.040" 37.8mm	
Hex Width	0.98" 25mm	
Tools	Specification	Comment
Cable Preparation	SP-500	
Connector Compression	HCG-FRAMESET-1/2, HCG-CC	Insert B
Torque Wrench	Adjustable Wrench	