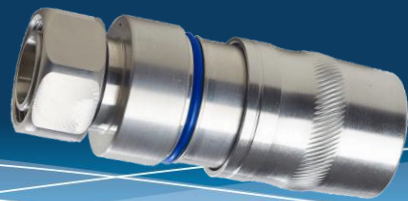


UPL-4MT-12



UPL-4MT-12 DATA SHEET

4.3–10 Male Connector for 1/2" Plenum Cables

Mechanical	Specification	Comment
Pull Force Combined	> 200 lbs .89 kN	Cable limited
Cable/Connector Torque	5 ft-lbs 6.7 N-m	Cable limited
Interface Durability	500 Cycles	
Electrical	Specification	Comment
Frequency Range	DC to 6 GHz	
Impedance	50Ω Nominal	
Average Return Loss (VSWR) DTF	> -40dB (1.02) 0–1 GHz, > -36dB (1.03) 1–2 GHz, > -32dB (1.05) 2–4 GHz, -28dB (1.08) 4–6 GHz	As per Anatel 75
Insertion Loss	< .1√F(GHz)	
3rd Order IMD	-153 dBc minimum, -160 dBc typical	As per IEC 62037-2, -3
Voltage Withstand	> 3.0 kV	
Shielding Effectiveness	< -120dB	0–1 GHz
Insulation Resistance	10GΩ initial, 100MΩ after conditioning	
Environmental	Specification	Comment
Operating Temperature/Storage Temperature	-55°C to +85°C / -55°C to +85°C	
Interface Moisture	No leakage, mated or unmated > 1.0 Bar	
Moisture Ingress	No leakage	ANSI/SCTE60 2004, IP-67, IP-68, IEC 60529
Corrosion Resistance	1000 Hours	
H.A.L.T.	40 Hours	
General	Specification	Comment
Cable Supported	Andrew HL4RP-50A, HL4RPV-50, AL4PRV-50, RFS ICA12-50JPL, HCA12-50JPL, ICA12-50JPLW	
Weight	0.276 lbs. 125.2 g	
WPS Weather Protection	WPS-N-4A	
Length	2.797 in 71.0 mm, 2.382 in 60.5 mm	
Outer Diameter	1.040 in 26.4 mm	
Hex Width	.88 in 22 mm	
Tools	Specification	Comment
Cable Preparation	SP-12-PL	Bit "PL", all cables
Connector Compression	HCG-FRAMESET-1/2, HCG-CC	Insert D
Torque Wrench	TQ-78-F8	8 ft-lbs 10.8 N-m