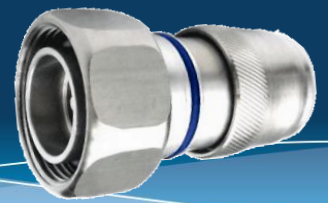


UPL-DM-12S



UPL-DM-12S DATA SHEET

7-16 DIN Male Connector for 1/2" Superflexible Plenum Cables

Mechanical	Specification	Comment
Pull Force Combined	> 175 lbs .78 kN	Cable limited
Cable/Connector Torque	5 ft-lbs 6.7 N-m	Cable limited
Interface Durability	500 Cycles	
Electrical	Specification	Comment
Frequency Range	DC to 6 GHz	
Impedance	50Ω Nominal	
Average Return Loss (VSWR) DTF	> -40dB (1.02) 0-1 GHz, > -36dB (1.03) 1-2 GHz, > -32dB (1.05) 2-4 GHz, -28dB (1.08) 4-6 GHz	As per Anatel 75
Insertion Loss	< .1∇F(GHz)	
3rd Order IMD	-153 dBc minimum, -160 dBc typical	As per IEC 62037-2, -3
Voltage Withstand	> 3.0 kV	
Shielding Effectiveness	< -120dB	0-1 GHz
Insulation Resistance	10GΩ initial, 100MΩ after conditioning	
Environmental	Specification	Comment
Operating Temperature/Storage Temperature	-55°C to +85°C / -55°C to +85°C	
Interface Moisture	No leakage, mated or unmated > 1.0 Bar	
Moisture Ingress	No leakage	ANSI/SCTE60 2004, IP-67, IP-68, IEC 60529
Corrosion Resistance	1000 Hours	
H.A.L.T.	40 Hours	
General	Specification	Comment
Cable Supported	Andrew HS4RP	
Weight	0.311 lbs. 141.1g	
WPS Weather Protection	WPS-4S	
Length	1.845" 46.8mm	
Outer Diameter	1.085" 27.5mm	
Hex Width	1.25" 32mm	
Tools	Specification	Comment
Cable Preparation	SP-12SPL	No coring required
Connector Compression	HCG-FRAMESET-1/2, HCG-CC	Insert A
Torque Wrench	TQ-114-F18	18 ft-lbs 24.4 N-m