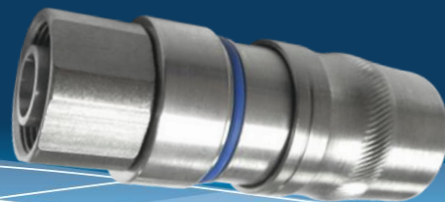


UPL-MDM-12T



UPL-MDM-12T DATA SHEET

4.1–9.5 Mini DIN Male Connector for 1/2" Trilogy Plenum Cable

Mechanical	Specification	Comment
Pull force combined	> 200 lbs .89 kN	Cable limited
Cable/connector torque	5 ft-lbs 6.7 N-m	Cable limited
Interface durability	500 cycles	
Electrical	Specification	Comment
Frequency range	DC to 6 GHz	
Impedance	50Ω Nominal	
Average return loss (VSWR) DTF	> -40dB (1.02) 0–1 GHz, > -36dB (1.03) 1–2 GHz, > -32dB (1.05) 2–4 GHz, -28dB (1.08) 4–6 GHz	As per Anatel 75
Insertion loss	< .1√F(GHz)	
Third-order IMD	-153 dBc minimum, -160 dBc typical	As per IEC 62037-2, -3
Voltage withstand	> 3.0 kV	
Shielding effectiveness	< -120dB	0–1 GHz
Insulation resistance	10GΩ initial, 100MΩ after conditioning	
Environmental	Specification	Comment
Operating temperature / storage temperature	-55°C to +85°C / -55°C to +85°C	
Interface moisture	No leakage, mated or unmated > 1.0 Bar	
Moisture ingress	No leakage	ANSI/SCTE60 2004, IP-67, IP-68, IEC 60529
Corrosion resistance	1000 hours	
H.A.L.T.	40 hours	
General	Specification	Comment
Cable supported	Trilogy AP6012J50, APC012J50, AC012R50, AC012J50, AP012U50, ACC012J50, ACC012R50	
Weight	.310 lbs. 141g	
WPS weather protection	WPS-NMD-12A	
Length	2.720" 69.1mm	
Outer diameter	1.040" 26.4mm	
Hex width	0.87" 22mm	
Tools	Specification	Comment
Cable preparation	SP-1/2-LDF4D	Bit "U", all cables
Connector compression	HCG-FRAMESET-1/2, HCG-CC	Insert A
Torque wrench	TQ-114-F18	18 ft-lbs 24.4 N-m