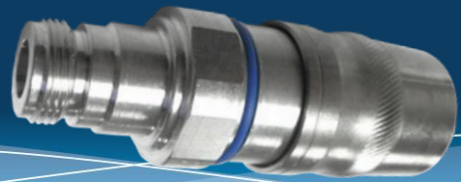


UPL-NF-12T



UPL-NF-12T DATA SHEET

N Female Connector for 1/2" Trilogy Plenum Cable

Mechanical	Specification	Comment
Pull force combined	> 200 lbs .89 kN	Cable limited
Cable/connector torque	5 ft-lbs 6.7 N-m	Cable limited
Interface durability	500 cycles	
Electrical	Specification	Comment
Frequency range	DC to 6 GHz	
Impedance	50Ω Nominal	
Average return loss (VSWR) DTF	> -40dB (1.02) 0-1 GHz, > -36dB (1.03) 1-2 GHz, > -32dB (1.05) 2-4 GHz, -28dB (1.08) 4-6 GHz	As per Anatel 75
Insertion loss	< .1√F(GHz)	
Third-order IMD	-153 dBc minimum, -160 dBc typical	As per IEC 62037-2, -3
Voltage withstand	> 2.5 kV	
Shielding effectiveness	< -120dB	0-1 GHz
Insulation resistance	5GΩ initial, 200MΩ after conditioning	
Environmental	Specification	Comment
Operating temperature / storage temperature	-55°C to +85°C / -55°C to +85°C	
Interface moisture	No leakage, mated or unmated > 1.0 Bar	
Moisture ingress	No leakage	ANSI/SCTE60 2004, IP-67, IP-68, IEC 60529
Corrosion resistance	1000 hours	
H.A.L.T.	40 hours	
General	Specification	Comment
Cable supported	Trilogy AP6012J50, APC012J50, AC012R50, AC012J50, AP012U50, ACC012J50, ACC012R50	
Weight	0.256 lbs. 116.1g	
WPS weather protection	WPS-N-4A	
Length	2.500" 63.5mm	
Outer diameter	1.040" 26.4mm	
Hex width	0.98" 25mm	
Tools	Specification	Comment
Cable preparation	SP-12PL	Marking guide included with connector
Connector compression	HCG-FRAMESET-1/2, HCG-CC	Insert B
Torque wrench	Adjustable wrench	