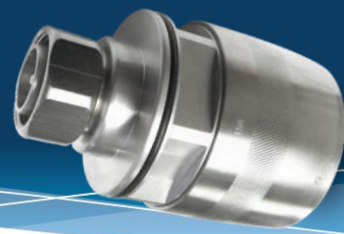


# UXP-DM-158



## UXP-DM-158 DATA SHEET

### 7-16 DIN Male Connector for 1 5/8" Cables

Mechanical	Specification	Comment
Pull Force Combined	> 600 lbs   2.67	Cable limited
Cable/Connector Torque	50 ft-lbs   67.8N-m	Cable limited
Interface Durability	500 Cycles	
Electrical	Specification	Comment
Frequency Range	DC to 2.7 Ghz	
Impedance	50Ω Nominal	
Average Return Loss (VSWR) DTF	> -40dB 0-1 GHz, > -36dB 1-2 GHz, > -32dB 2-2.7	As per Anatel 75
Insertion Loss	< .1∠F(GHz)	
3rd Order IMD	-153 dBc minimum, -160 dBc typical	As per IEC 62037-2, -3
Voltage Withstand	> 3.0 kV	
Shielding Effectiveness	< -120dB	0-1 GHz
Insulation Resistance	10GΩ initial, 100MΩ after conditioning	
Environmental	Specification	Comment
Operating Temperature/Storage Temperature	-55°C to +85°C / -55°C to +85°C	
Interface Moisture	No leakage, mated or unmated > 1.0 Bar	
Moisture Ingress	No leakage	ANSI/SCTE60 2004, IP-67, IP-68, IEC 60529
Corrosion Resistance	1000 Hours	
H.A.L.T.	40 Hours	
General	Specification	Comment
Cable Supported	Andrew AVA7-50, Andrew AL7-50, Andrew LDF7-50, Andrew VXL7-50, RFS LCF158-50, Draka RFA158, Leoni 1-5/8"R, Eupen EC7-50, LS/Superior Essex LHF42D, LS/Superior Essex LHF-42DUF, LS/Superior Essex HFC 42D, LS/Superior Essex HFAC 42D, Hansen 1-5/8"	
Weight	1.168 lbs.   529.8g	
WPS Weather Protection	WPS-7	
Length	3.020"   76.7mm	
Outer Diameter	2.490"   63.2mm	
Hex Width	1.25"   32mm	
Tools	Specification	Comment
Cable Preparation	SP-158	
Connector Compression	HCG-FRAMESET-158, HCG-CC	
Torque Wrench	TQ-114-F18	18 ft-lbs   24.4 N-m